

## BEFORE YOU BEGIN

CONGRATULATIONS on your purchase of the EZ Snap Shades. You have taken the first step in helping reduce your energy consumption while blocking harmful UV rays, unwanted heat and glare.

The enclosed fabric is an optical grade fabric and will not hinder your view when looking out through your window.

When unrolling the mesh fabric, you will notice a natural curl from being rolled up. The fabric should be installed with the curl towards the glass for a more professional look.

NOTE: Adhesive studs are NOT recommended for wood surfaces. They stick great to surfaces like vinyl, aluminum and fiberglass, as long as the surface is clean, flat and not textured. Press the adhesive studs into place using at least 15 lbs of force, then wait 24 hours for the adhesive to bond before installing your shading mesh. See bonding time chart below.

If you are installing into wood, you will need to use the screw studs. Do not over tighten. Pins and caps are designed to work with both the adhesive and screw studs.

TIME	BOND STRENGTH
20 min	50%
60 min	75%
24 hrs	90%
3 days	100%

### TIP:

- Place fasteners a maximum of 10" apart. In windy locations or for windows over 25 sq/ft in size, use a 5" spacing. This will double the holding power of the fasteners.
- The fabric tightens slightly as temperatures increase. We recommend installing your screens in the coolest part of the day. **DO NOT** install screens in the hotter part of the day, otherwise they may show wrinkles or sagging in the cooler times of the day.



FOR MORE INFORMATION

**Call Toll Free:**

**1-877-439-7627**

**1-877-4EZSNAP**

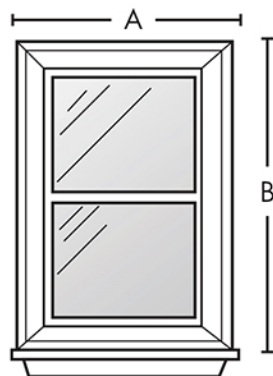
### IMPORTANT:

**There should be little or no tension on the mesh when installed. If excessive tension is used from pin to pin, adhesive failure may occur. Do not stretch fabric over pins.**

## 1. Take Measurements

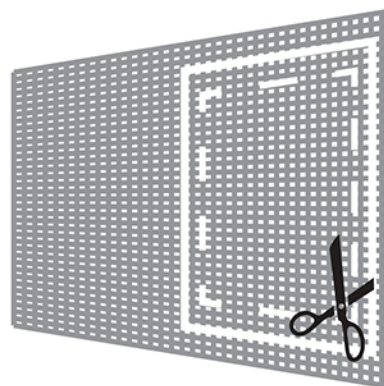
For width [A], measure from one outside edge of the casing to the other.

For height [B], measure from one outside edge of the casing to the other. Add a 1/2" to each of these measurements if you want to hide the window frames. Repeat process if additional areas are to be covered.



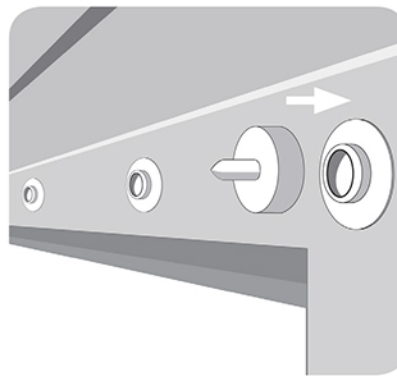
## 2. Cut Fabric

Unroll fabric and lay flat. Mark out measurements on the fabric. A straight edge and framing square are helpful for this step. When ready, cut window shade from fabric using sharp scissors. (Tip: Before cutting, consider alternative layouts to ensure the most efficient use of fabric.)



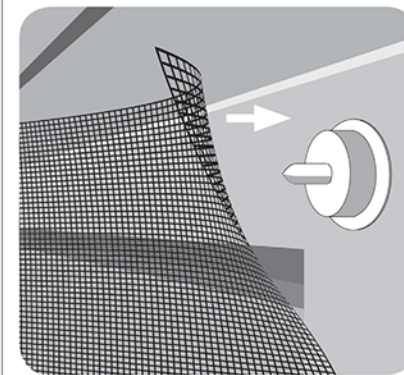
## 3. Studs & Pins

Thoroughly clean the area where the studs will be positioned. A 50/50 solution of isopropyl alcohol and water works the best. Remove the adhesive backing on the studs and press them into place around your window, **using at least 15lbs of pressure**. Install studs 5" to 10" apart, on a day when temperatures are at least +15c/60F for best performance. Snap the pins onto the studs.



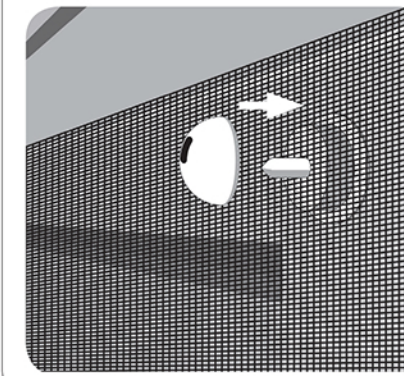
## 4. Fabric Placement

Starting in the top corner, push the fabric to the base of the pin. Move from one pin to the next, working from top to bottom. Adjust the mesh on the pins as needed to remove any wrinkles. **IMPORTANT:** There should be little or no tension on the mesh when installed. If excessive tension is used from pin to pin, adhesive failure may occur. **Do not stretch fabric over pins.**



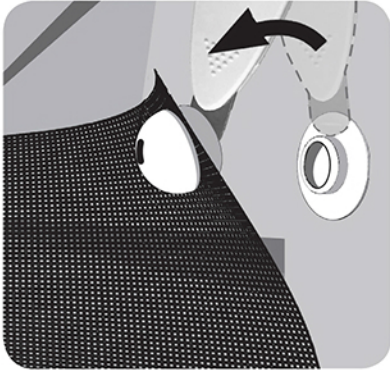
## 5. Cap Placement

Place the caps over pins and press on lightly. The cap will click and secure the fabric in its place. Make sure you press the caps fully onto the pins. If fabric position on pin needs adjusting, remove cap by pulling the lever on the cap towards the outside of the cap. Pull the cap off of the pin, adjust fabric and replace when done.



## Removal

To remove your EZ Snap Shades, always use the tool provided. Gently pry the base of the pin away from the stud to unsnap the shades from your window frame. The cap & pin stay locked onto the fabric and the studs remain in place, ready to be used next time. *Removal without the tool may damage fabric or fasteners and void the warranty.*



## Care and Maintenance

Clean the screens right on the window using a garden hose. If a more thorough cleaning is desired, simply remove the shade and wash with a soft bristled brush with warm soapy water. Use a mild dish washing liquid. Rinse well.



## EZ Snap Benefits

- Provides daytime privacy
- Lowers interior temperatures
- Cools the surface of the glass
- Long lasting and durable
- Reduces glare
- Lowers or eliminating A/C costs
- Prevents bird strikes
- Mildew and fade resistant
- Performance Warranty
- Easily cleaned with a garden hose
- Blocks the heat, not the view
- Weather and wind resistant
- Easily removed for storage
- Pet resistant
- Can be cut to any size or shape
- Installed without specialized tools
- Helps reduce global warming

## Applications

- Residential windows
- R.V. windows
- Skylights
- Yacht & Boat windows
- Privacy blind for sundeck railings
- Windshield shades

FOR MORE INFORMATION

Call Toll Free:

**1-877-439-7627**

**1-877-4EZSNAP**

**EZ SNAP™**  
**Exterior Shades**  
EZ Snap Products Inc.

**EZ SNAP™**  
**Exterior Shades**

featuring the revolutionary **NEW**

**EZ SNAP™** Fastener system

